



OAKLANDS FARM SOLAR PARK

Applicant: Oaklands Farm Solar Ltd

Environmental Statement

Chapter 10 – Figure 10.1 – 10.9

May 2024

Document Ref: EN010122/S51/6.1/Fig 10.1 – 10.9

Revision: S51 Submission

Planning Act 2008

Infrastructure Planning (Application: Prescribed Forms and Procedure) Regulations 2009 - 5(2)(a)

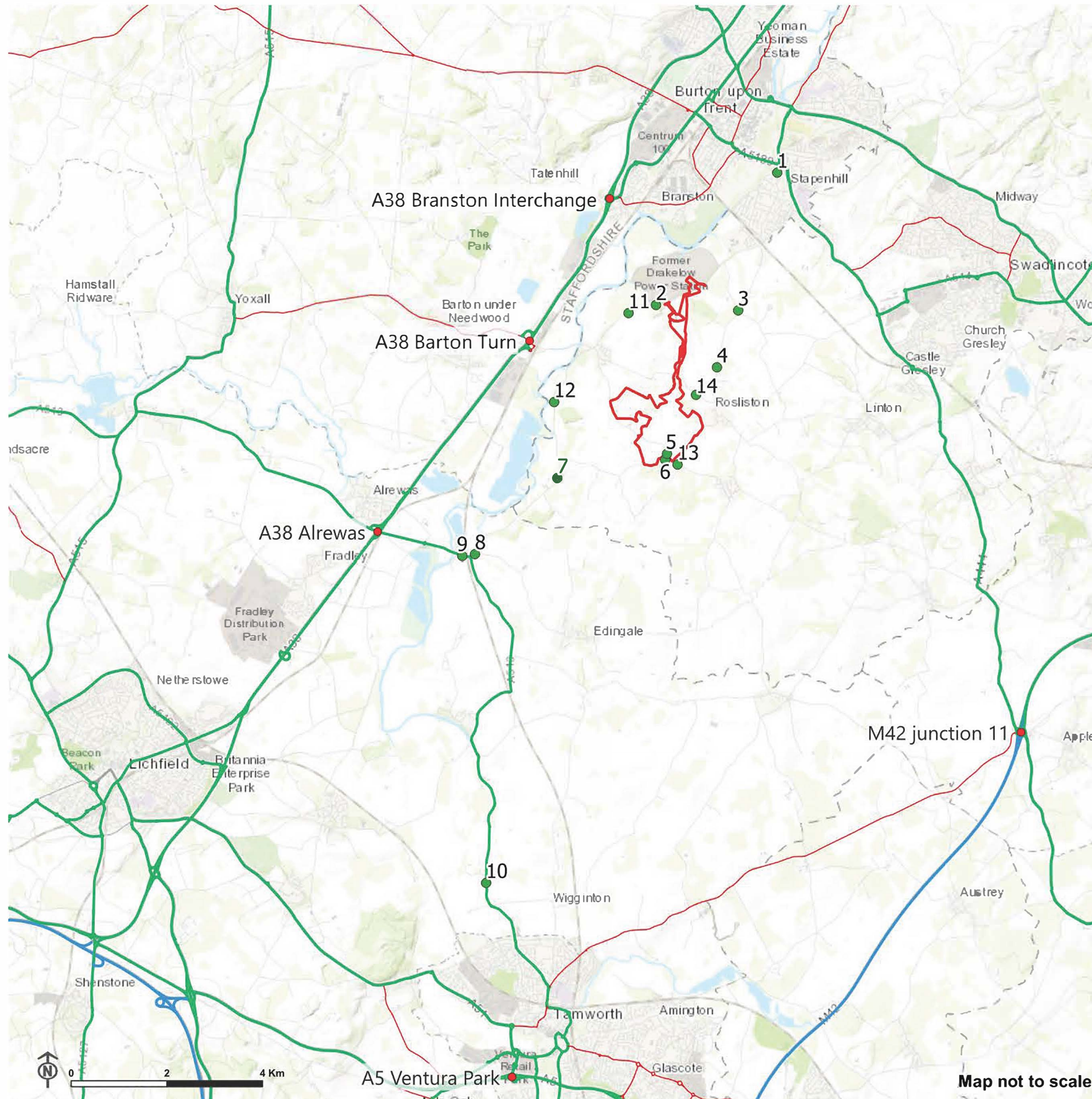
**Oaklands Farm Solar
Park - Environmental
Statement Volume 2**
**Chapter 10: Transport
and Access Figures**

Final report
Prepared by LUC
January 2024

- Figure 10.1: Automatic Traffic Count Locations
- Figure 10.2: Scenario 1 – Preferred Construction Vehicle Routing
- Figure 10.3: Scenario 2a – Likely Construction Vehicle Routing
- Figure 10.4: Scenario 2b – Back-up Construction Vehicle Routing
- Figure 10.5: Locations of Sensitive Receptors
- Figure 10.6: Study Area
- Figure 10.7: Assessed Construction Vehicle Routes (Southern Access)
- Figure 10.8: Assessed Construction Vehicle Routes (Northern Access)
- Figure 10.9: Assessed Construction Vehicle Routes (Central Access)



Figure 10.1: ATC Locations



- Site boundary
- ATC Locations

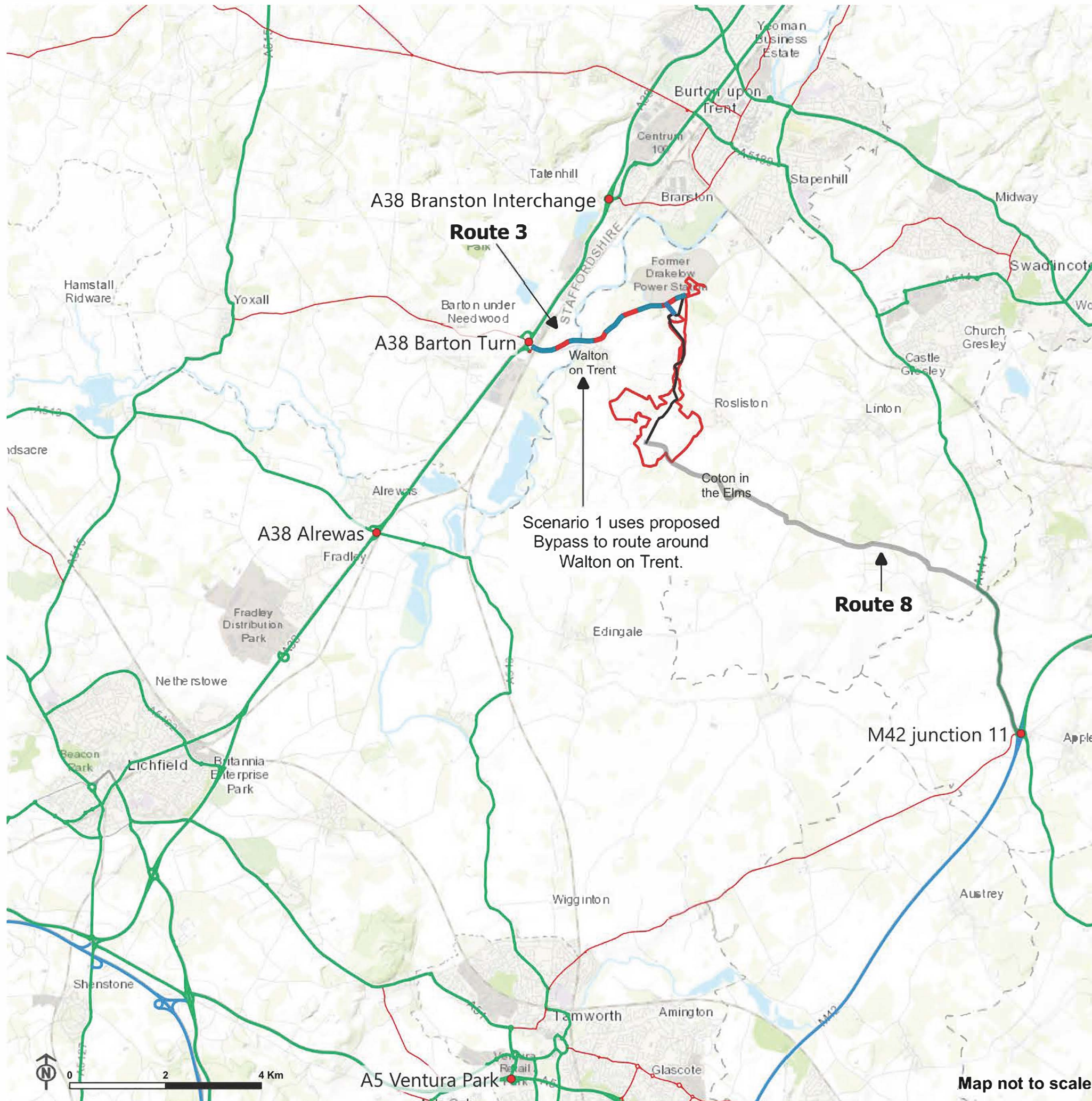
- Road Network
- A Road
 - B Road
 - Motorway

PINS reference: EN010122





Figure 10.2: Scenario 1 Preferred Construction Vehicle Routing



Site boundary

Scenario 1 Construction Routes

- Light Vehicle Route
- Heavy Vehicle Route
- Temporary Construction Haul Road
- Abnormal Indivisible Load

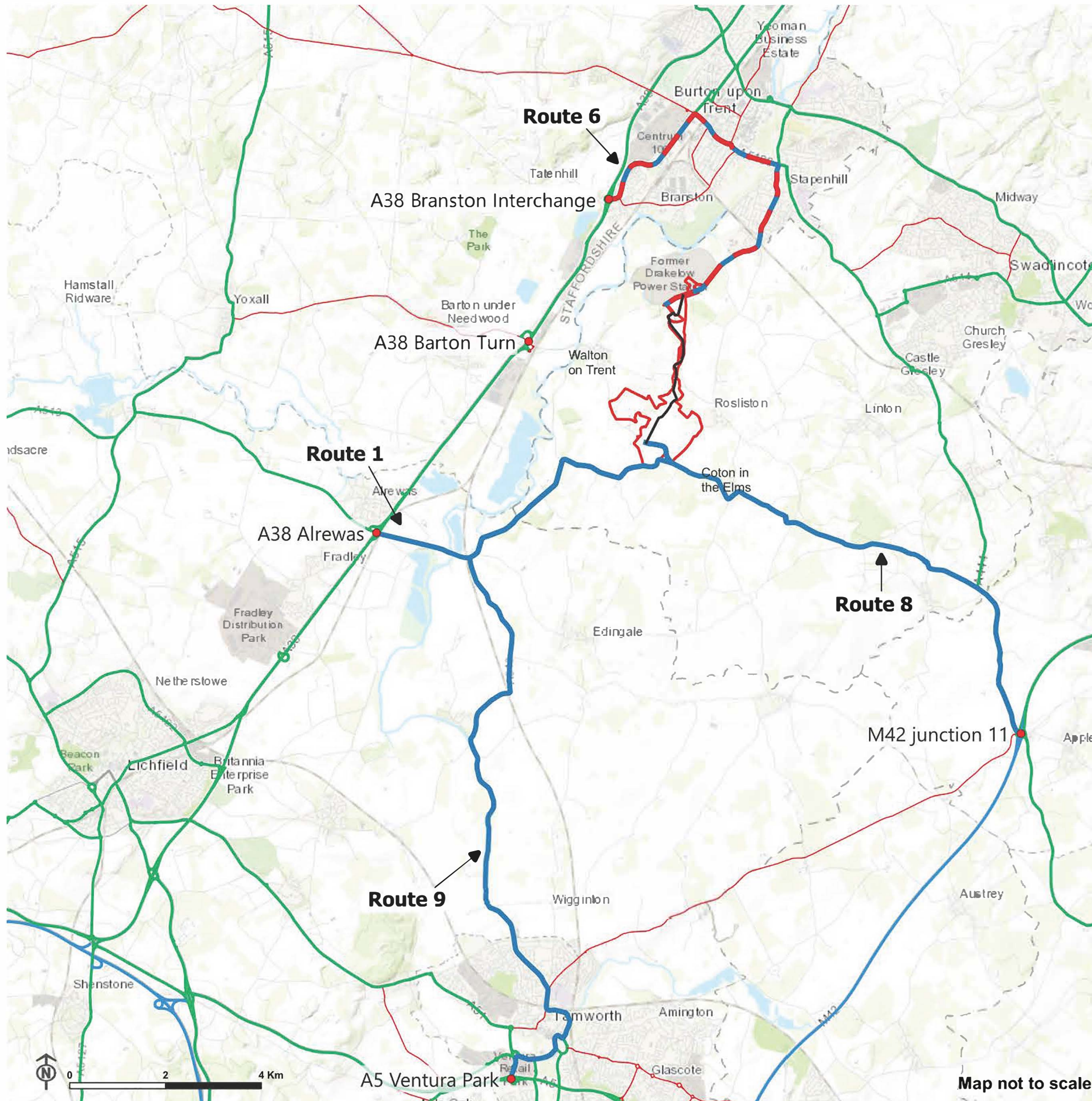
Road Network

- A Road
- B Road
- Motorway





Figure 10.3: Scenario 2A Likely Construction Vehicle Routing



Site boundary

Scenario 2a Construction Routes

Light Vehicle Route

Heavy Vehicle Route

Temporary Construction Haul Road

Road Network

A Road

B Road

Motorway

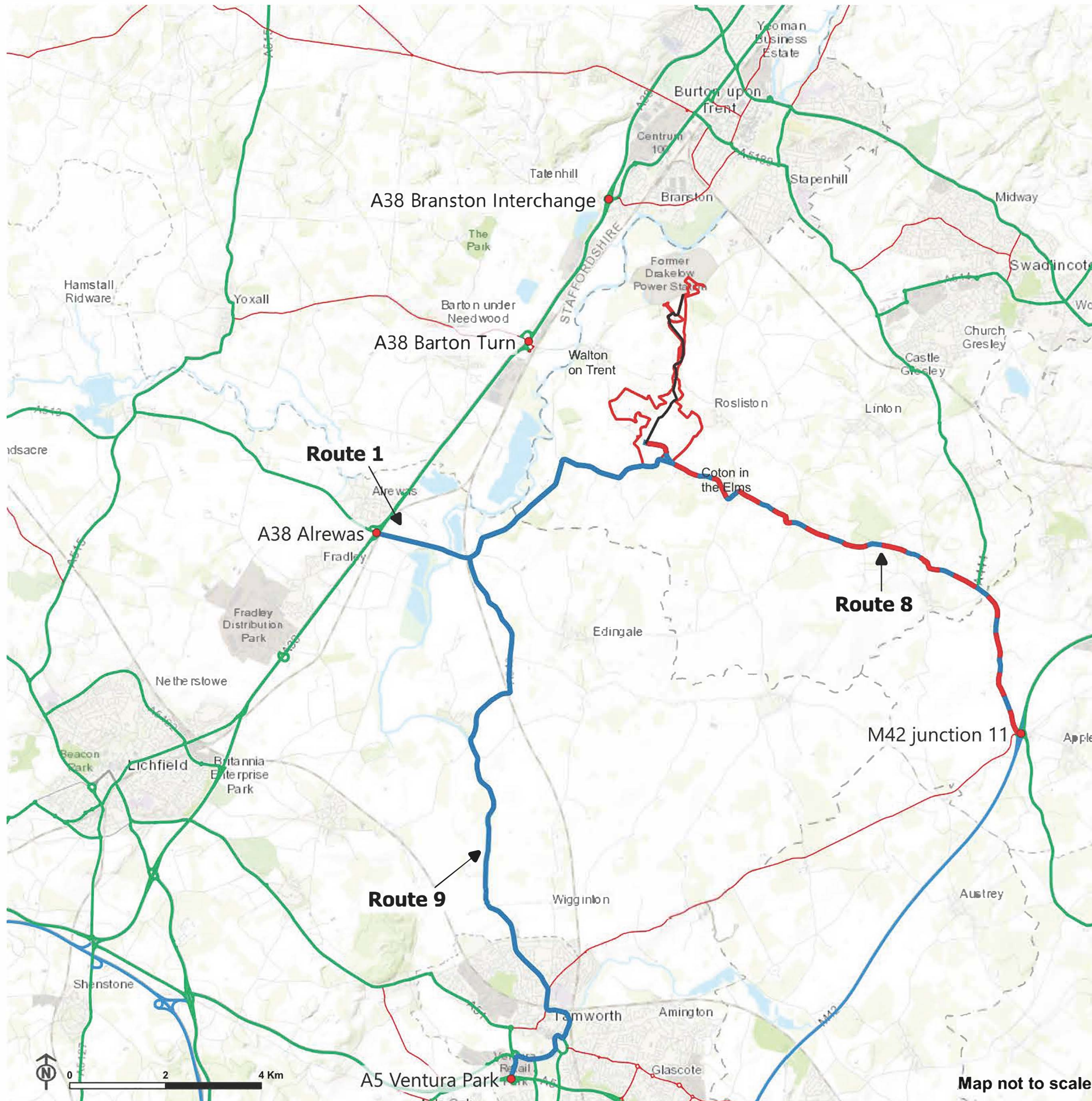
Note: Abnormal Indivisible Load to use Route 8

PINS reference: EN010122





Figure 10.4: Scenario 2B Back-up Construction Vehicle Routing



Site boundary

Scenario 2b Construction Routes

Light Vehicle Route

Heavy Vehicle Route

Temporary Construction Haul Road

Road Network

A Road

B Road

Motorway

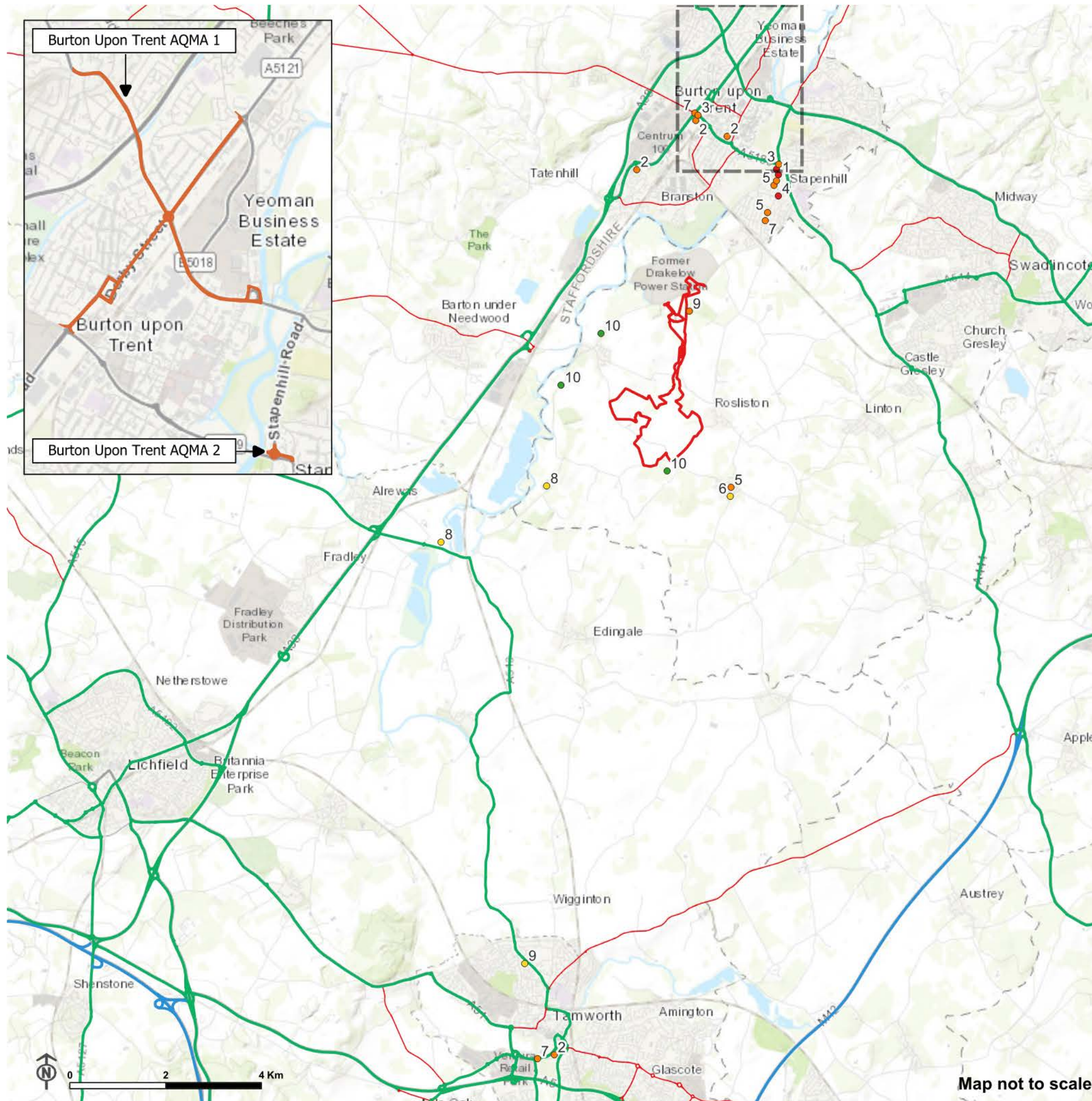
Note: Abnormal Indivisible Load to use Route 8

PINS reference: EN010122





Figure 10.5: LOCATION OF SENSITIVE RECEPTORS



Site boundary

Road Network

A Road

B Road

Motorway

Location of Sensitive Receptors

High

Low

Medium

Very Low

Air Quality Management Area (AQMA)

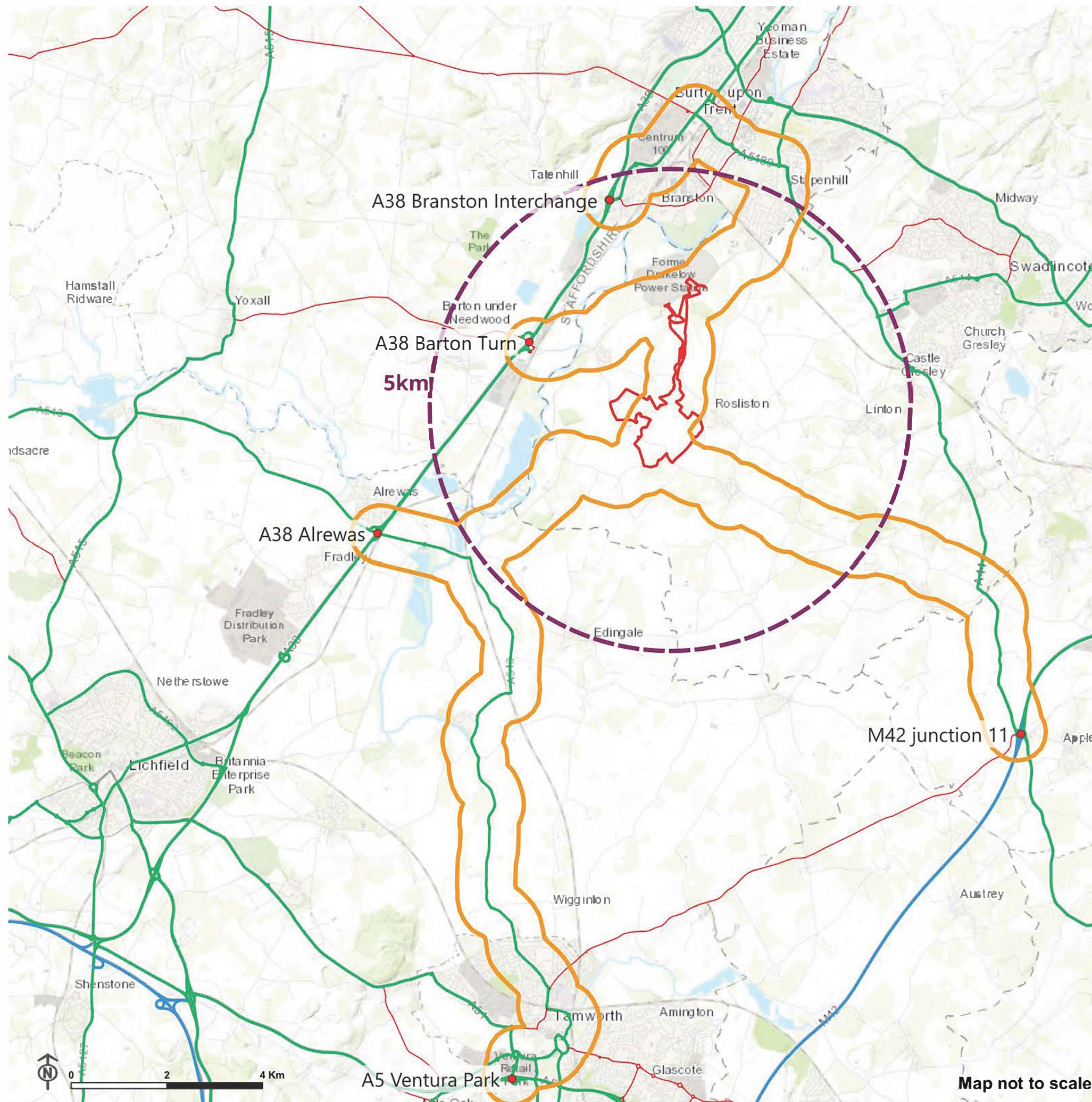
1	Residential / Care home	High
2	Retail Units / Businesses	Medium
3	Air Quality Management Area (AQMA)	Medium
4	Educational premises	High
5	Residential Dwelling Fronting the Carriageway	Medium
6	Parked Vehicles On-Street	Low
7	Collision Cluster (3+)	Medium
8	Event Centre (National and Regional)	Low
9	Residential Dwellings Set Back From The Carriageway	Low
9	Public Right of Way	Medium
10	Local Farm Set Back From The Carriageway	Very Low

PINS reference: EN010122





Figure 10.6: Study Area



- Site boundary
- Study Area

Study Area

- Road Network
- A Road
- B Road
- Motorway

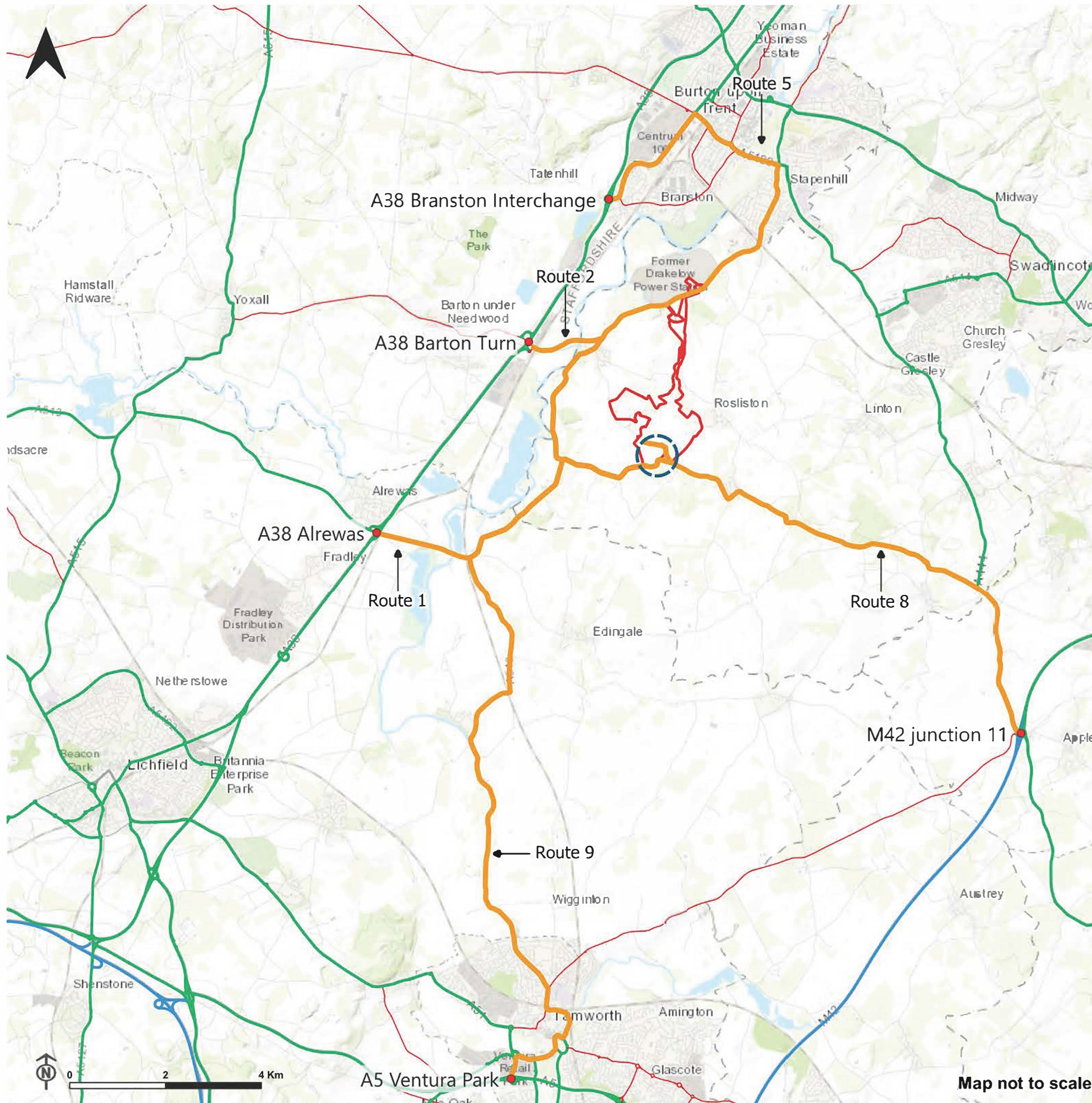
PINS reference: EN010122



Map not to scale



Figure 10.7: Assessed Construction Vehicle Routes (Southern Access)



- Assessed construction vehicle routes to southern access
- Site boundary
- Southern Access

- Road Network
- A Road
 - B Road
 - Motorway

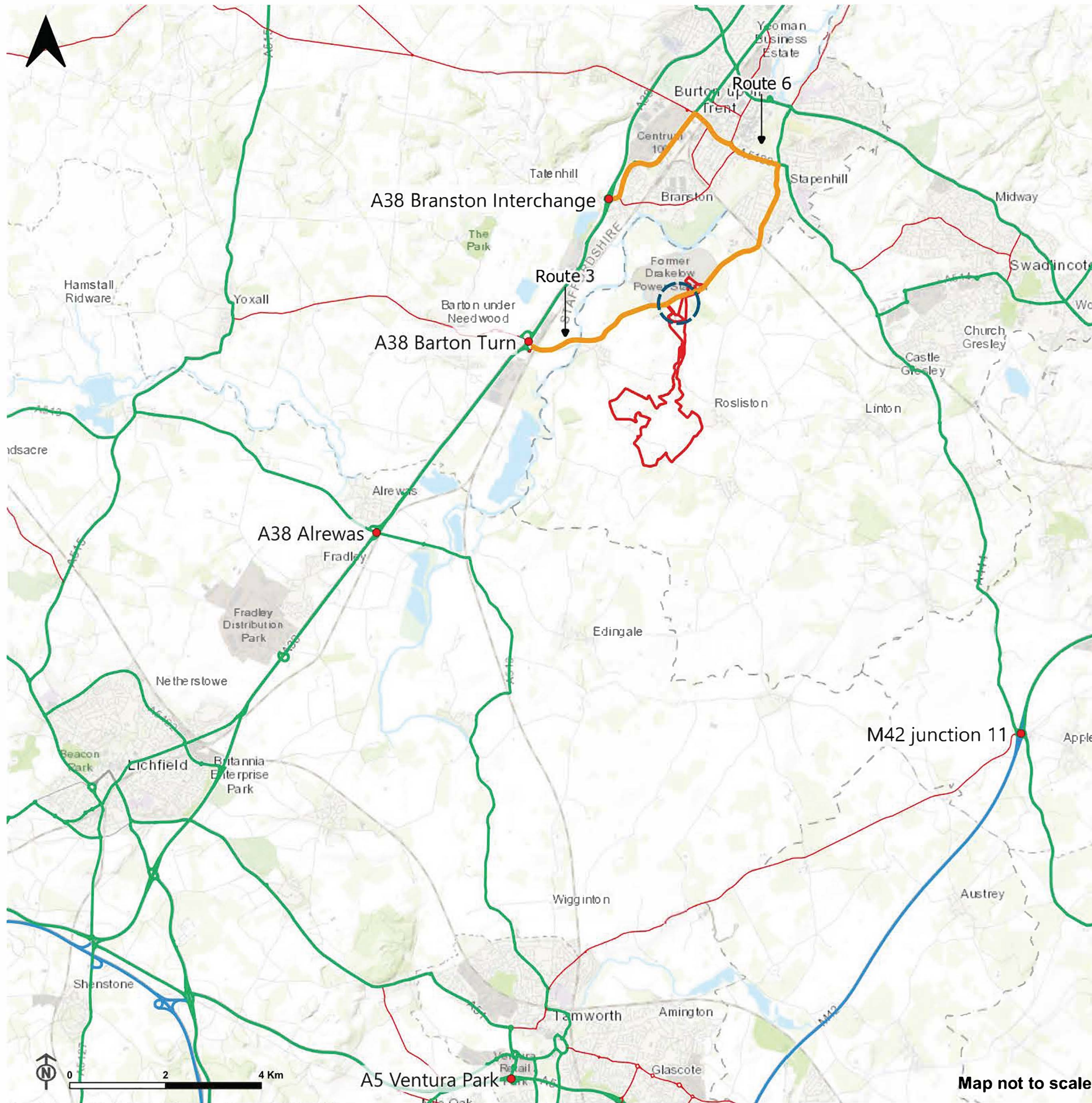
Note - The routes shown in Figures 10.7 - 10.9 were subject to varying levels of assessment and some have been discounted at an early stage. They are shown for reference only. The routes taken forward to full assessment are shown in Figures 10.2 - 10.4.







PINS reference: EN010122





Figure 10.8: Assessed Construction Vehicle Routes (Northern Access)



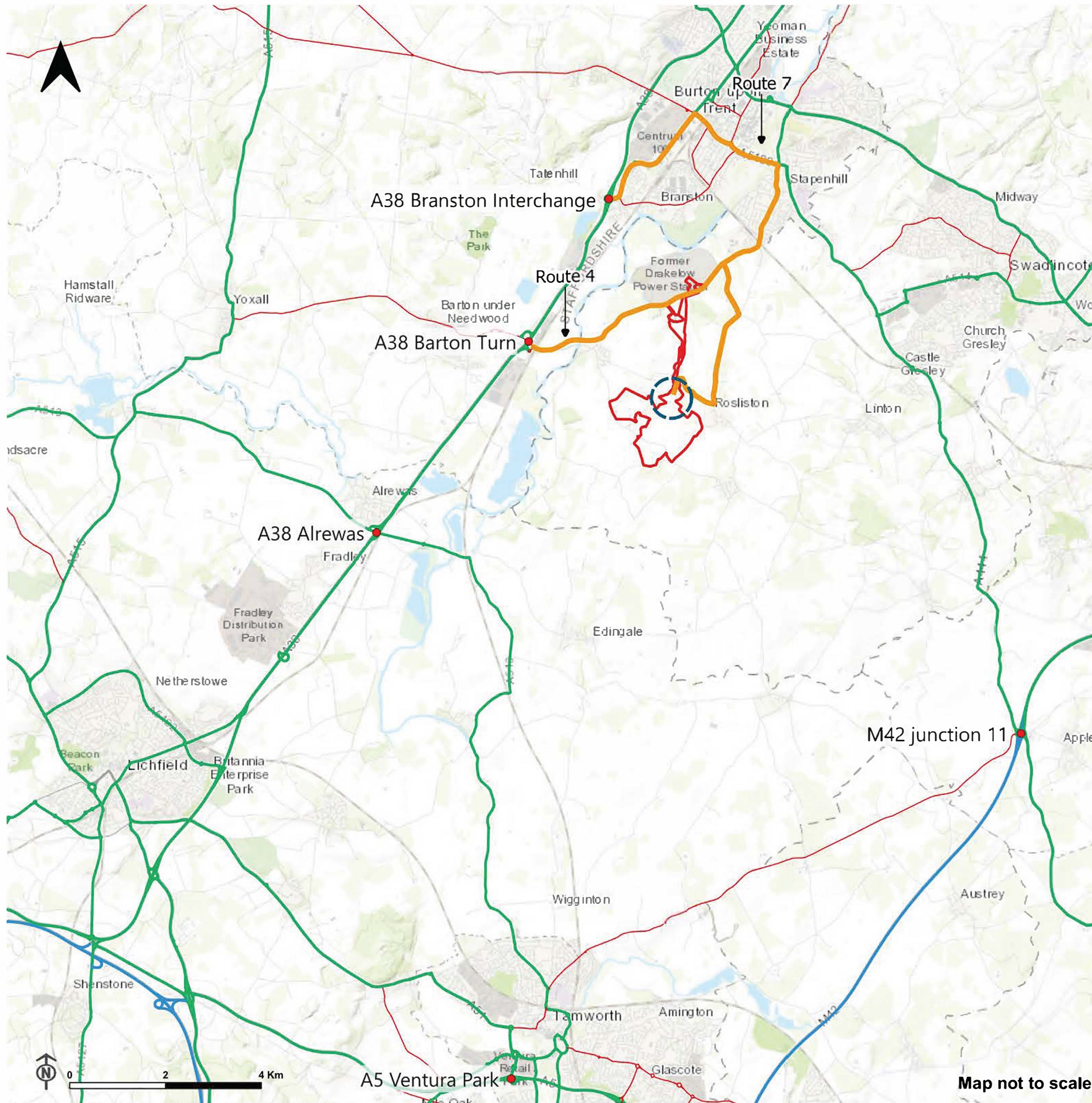
-  Assessed construction vehicle routes to northern access
-  Site boundary
-  Northern Access
- Road Network**
-  A Road
-  B Road
-  Motorway

Note - The routes shown in Figures 10.7 - 10.9 were subject to varying levels of assessment and some have been discounted at an early stage. They are shown for reference only. The routes taken forward to full assessment are shown in Figures 10.2 - 10.4.





Figure 10.9: Assessed Construction Vehicle Routes (Central Access)



- Assessed construction vehicle routes to central access
- Site boundary
- Central Access

- Road Network
- A Road
 - B Road
 - Motorway

Note - The routes shown in Figures 10.7 - 10.9 were subject to varying levels of assessment and some have been discounted at an early stage. They are shown for reference only. The routes taken forward to full assessment are shown in Figures 10.2 - 10.4.

